

# SUNHEATER

## SWIMMING POOL SOLAR HEATING SYSTEMS

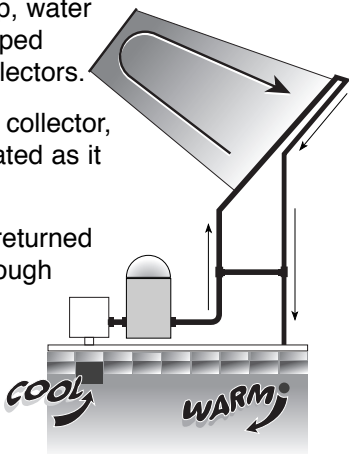
### for Aboveground Pools

Product Number S220

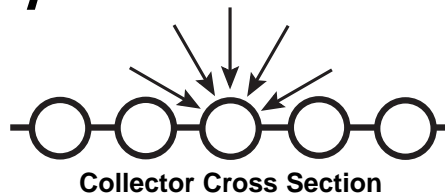
# INSTALLATION & OPERATION MANUAL

## How Solar Pool Heating Works

- Using your pool pump, water is automatically pumped through the solar collectors.
- As sun shines on the collector, the water is then heated as it moves through it.
- The heated water is returned back to the pool, through your return lines.
- You enjoy your own heated pool with no fuel costs.



## Why Solar Heat Works Best



- Water is heated as it moves through the many tubes in the solar collectors.
- Tube and web design traps heat and catches light as the sun moves across the sky.
- Tough polypropylene material won't rust, corrode or scale. Plus, the collector is reversible.

**PLEASE READ THIS MANUAL CAREFULLY. YOUR ENJOYMENT OF YOUR SOLAR HEATED POOL AND YOUR WARRANTY ARE AFFECTED BY HOW YOUR SOLAR HEATING SYSTEM IS INSTALLED**

**CAUTION:** a) Solar collectors are often installed on the roofs of buildings. Unless you are very familiar with working on roofs and have the proper ladders and safety equipment for such work, you should hire someone with the necessary experience to do the installation. Failure to observe safe practices on a roof or other elevated structure may result in falling, leading to serious injury to you.

b) When installing collectors on the ground, do not build a rack support that could allow children access into the pool.

# IMPORTANT

## READ THIS ENTIRE MANUAL BEFORE STARTING

### How Well Does Solar Heating Work?

A properly sized and installed system will raise pool temperatures up to 10° F/6° C during the season. You will only want to circulate water through the solar collector when the sun is shining. When it's cloudy or rainy, solar won't work as well (and you probably won't be swimming during those times), but your water will be back up to temperature after one or two warm days.

### Do I Need A Special Pump?

If your pool pump is in good working condition, there shouldn't be any problem using your existing pump. A one HP pump will handle installations up to 30 feet (9 meters) away from the pool equipment and one story up. If the collectors are cool to touch when the water is running through them on a warm sunny day, you are getting enough flow.

### Where Can I Put The Solar Collectors?

Anywhere you get at least 6 hours of full sun during the day. The longer the collectors are in full sun, the better they will work. If you are mounting the solar on an angle (like a roof or rack), the collectors should face in a southerly direction. For roof or rack mounting, you will need one SK-43 mounting kit (one SK43 will secure up to two S220 collectors). For high wind areas, we recommend one SK-34 High Wind Kit for each collector. Call SmartPool at 732-730-9880 for ordering info.

### What Tools Will I Need?

- Flat head screwdriver or 5/16" (8mm) nut driver
- For roof or rack mounting you will also need:
- Power drill
- 1/8" (3 mm) drill bit and a Phillips head bit
- Silicone sealant (GEII or equivalent)

### What additional parts will I need to install the solar system on a roof?

- If your current plumbing is 2" you will need a 1" to 2" PVC adaptor.
- One SmartPool Mounting Kit SK-43 (will secure up to two S220 collectors). One high wind SK-34 for each collector in high wind areas.
- You will need the correct amount of 1" (38 mm) Schedule 40 PVC pipe for the plumbing, going to and from your pool equipment.
- You will also need PVC primer, glue, and fittings (available where you buy PVC pipe).

### What additional parts will I need to install the solar system on the ground or on a rack?

- For a ground mount installation you will require 2 hoses - one that will reach from the pool equipment to the collector and one that reaches from the collector back to the pool.
- For a rack mount installation you will need SmartPool's mounting kit SK-43. For high wind areas you will need one SK-34 for each collector.

**USE ONLY SMARTPOOL-APPROVED MOUNTING KIT SK43  
AND FOLLOW THE DIRECTIONS PROVIDED.  
FAILURE TO COMPLY WILL VOID YOUR WARRANTY!**

**WARNING! POSITION THE RACK SO THAT IT DOES NOT  
PROVIDE ACCESS TO THE POOL FOR CHILDREN.**

### How much will the solar system weigh when filled with water?

Each solar box will weigh approximately 40 lbs (18 kg). when filled with water. There is very little additional load on your roof since the weight is dispersed over a large area.

Pool Sizes		Number of Solar Boxes	Area Needed
Round	Oval		
12' - 18' (3.7 m - 5.5 m)	12' x 24' (3.7 m x 7.3 m)	1	3 ft x 21 ft (1 m x 6.5 m)
21' - 24' (6.4 m - 7.3 m)	15' x 30' (4.6 m x 9.1 m) - 16' x 25' (4.9 m x 7.6 m)	2	5 ft x 21 ft (1.5 m x 6.5 m)
27' - 28' (4.9 m - 9.8 m)	16' x 32' (4.9 m x 9.8 m) - 18' x 34' (5.5 m x 10.4 m)	3	7 ft x 21 ft (2.1 m x 6.5 m)

Use a solar blanket to hold in heat at night or during cool weather.

# Product # S220 Kit Components

Kit	Qty	Item #	Description
	1	SCPNL220	2' x 20' (610 cm x 6.1 m) Polypropylene Solar Collectors
	1	SC018HSE	18" (45 cm) Plastic Flex Hose
	1		Limited Warranty

<b>SK-32</b>		<b>System Kit for S220</b>	
	2	69003	Elbow Connectors
	2	69002	PVC End Caps 1 1/2" (38 mm) FPT
	2	SC125CLMP	1 1/4 (31.75 mm) Stainless Steel Hose Clamps 35-51
	1	60554	Teflon Tape 1/2" (12.7 mm)
	1		Installation Manual

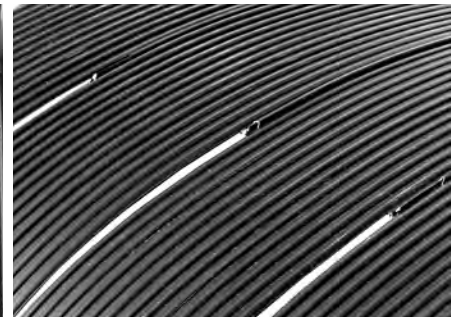


SC018HSE

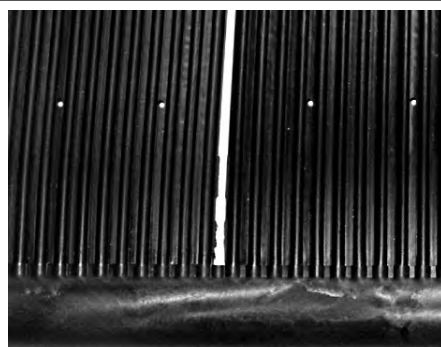


SK-32

SunHeater collectors are manufactured with special molds and materials designed to provide you with the most durable, high performance solar pool heating system available. Note: during manufacturing certain mechanical incisions are required to complete the assembly of the collector (see photos on right). These are normal and do not adversely affect the performance or durability of your SunHeater.



**Please Note:** Small holes in collector (see photo at right) are NOT to be used for mounting. Use only SmartPool-approved mounting kit SK43 and follow the directions provided. Failure to comply will void your warranty.

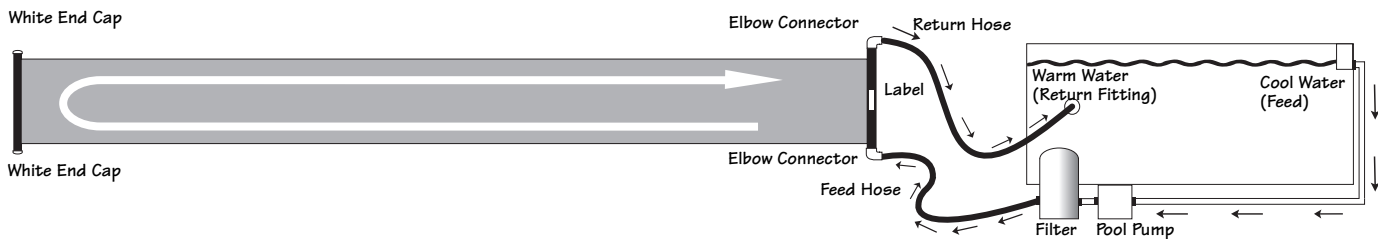


# SYSTEM LAYOUT

## Single System

### Required:

- Flathead screwdriver or 5/16" (8 mm) nut driver.
- To install your solar heating system you will require 2 hoses - one that will reach from the pool equipment to the collector and one that reaches from the collector back to the pool.

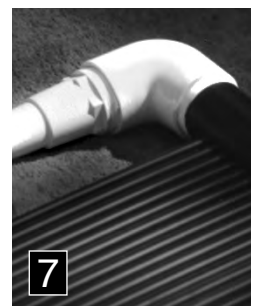


1. Provide an area that is free of any sharp objects with at least 6 hours of full sunlight a day.
2. Remove strap from collector and unroll it placing the headers with the serial number label closest to your pool equipment.
3. Allow the collector to relax in the sun (30 minutes to an hour). **DO NOT LAY COLLECTOR ON THE GRASS IT CAN DAMAGE THE LAWN UNDERNEATH! DO NOT WALK ON COLLECTOR.**
4. Remove and discard the black protective end caps covering the threaded ends of the header pipes.
5. Wrap the threaded ends of the headers with Teflon tape provided (as shown) for a watertight seal.
6. On the header without the label, thread white end caps on the open ends (as shown). Be careful not to cross-thread.
7. Thread elbow connectors on the open ends of the header with the label (as shown). Be careful not to cross-thread.
8. Turn off pool pump.
9. Go to pool and plug the round return fitting on the pool wall from the inside, so the water won't drain through (a winter plug works well).
10. Connect a hose from the filter to the lower elbow connector. Always fill the system from the bottom.
11. Connect another hose from pool return fitting to other elbow connector.
12. From the inside of the pool wall, remove the plug you placed in the round return fitting.

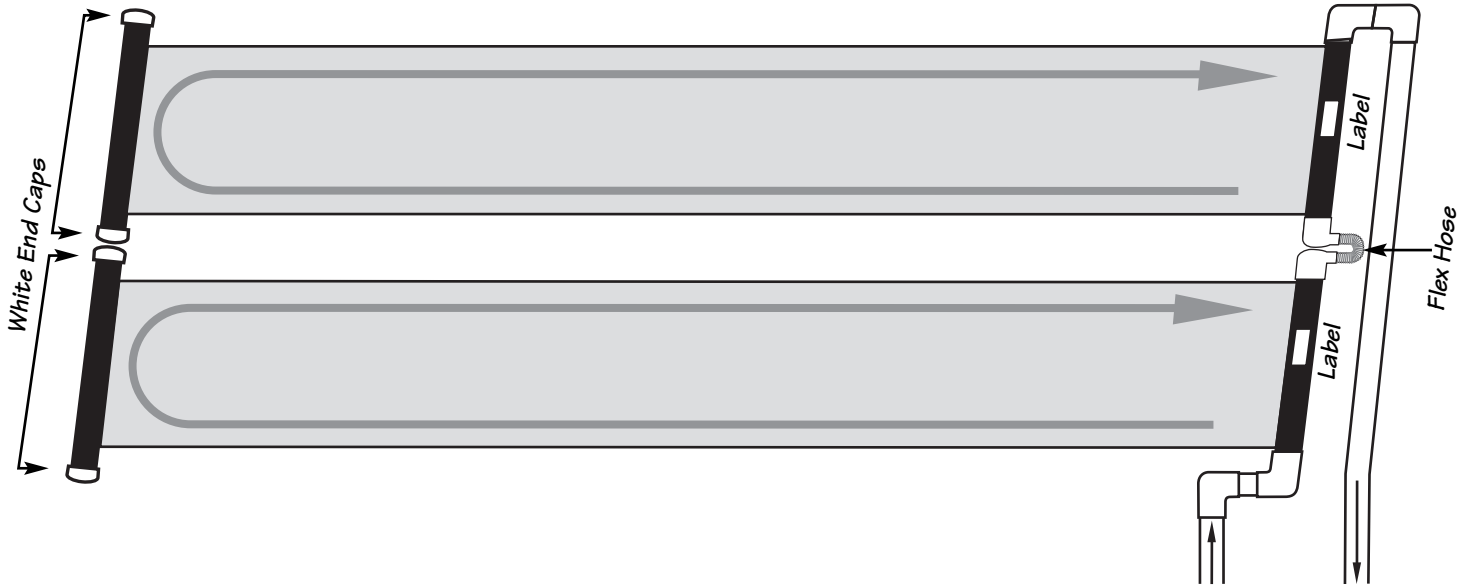
### YOU ARE NOW READY TO START-UP YOUR SOLAR POOL HEATER

13. Turn on the pump. Check for leaks and tighten the connections that need attention.

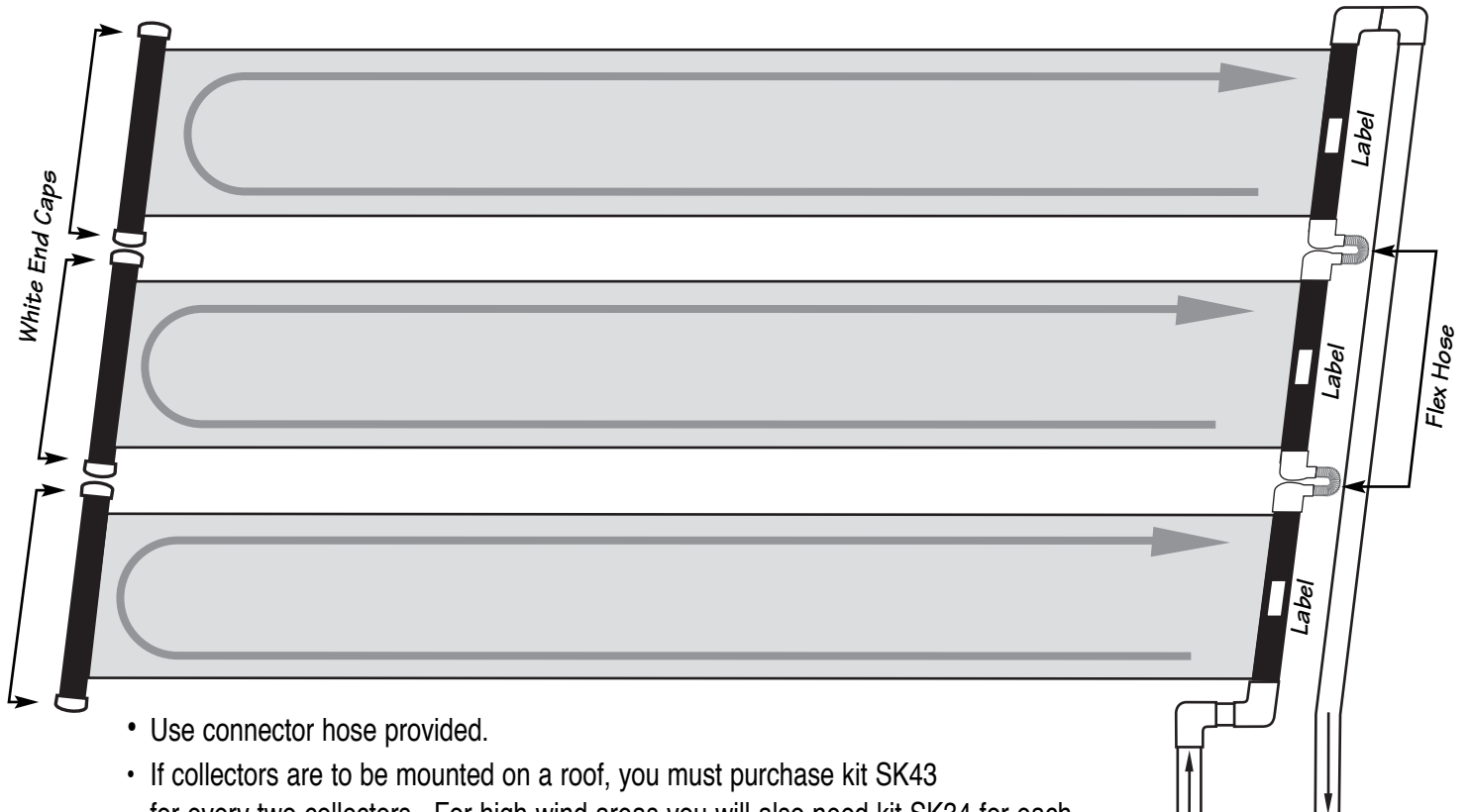
Note: Upon start-up you will see air bubbles come through the return hose. This is normal and will stop after all the air has been purged from the solar heating system.



# CONNECTIONS FOR TWO COLLECTORS



# CONNECTIONS FOR THREE COLLECTORS



- Use connector hose provided.
- If collectors are to be mounted on a roof, you must purchase kit SK43 for every two collectors. For high wind areas you will also need kit SK34 for each collector. Call your dealer or SmartPool at 1-732-730-9880.
- Slots are provided in each solar collector for mounting (DO NOT USE SMALL HOLES IN COLLECTORS FOR MOUNTING - SEE PAGE 3. DOING SO WILL VOID YOUR WARRANTY).
- Maximum of three collectors may be plumbed in series.
- Pitch the collectors slightly toward the end caps for winterizing and draining - 1" (25 mm) -2" (50 mm).
- Do not add additional mounting hardware other than SmartPool factory approved kits.

# OPERATION & MAINTENANCE

## Operation

1. The collector should feel cool to the touch when the sun is shining on the collector and water is passing through. This means that the heat is being transferred to the water.
2. The water returning to your pool will be a few degrees (3-5° F/2-3° C) warmer than the pool itself. This is the most efficient way to heat a large body of water like a pool. Keep circulating the water and add a few degrees each pass.
3. Circulate water through the solar collector at least 6 hours per day during the daylight hours on sunny days. If you circulate your water through the collector at night, or when it's overcast or on chilly days, you will cool your pool water rather than heat it. If you need to run your pump at night, divert the water directly back to the pool and bypass the solar system.

## Winterization

**YOUR SOLAR SYSTEM MUST BE DRAINED FOR WINTERIZATION! FREEZE DAMAGE IS NOT COVERED UNDER WARRANTY! YOU MUST DRAIN YOUR SOLAR COLLECTORS JUST LIKE YOU DRAIN THE REST OF YOUR POOL EQUIPMENT!**

Remove the white end cap at the top of the solar system. Remove the white end cap at the bottom and be sure ALL the water is drained out of the system. Replace end caps and blow pressurized air through the system. After blowing them out, remove and store the bottom end cap for use again in the spring when you start up again. You can leave the collectors in place (as long as they are completely drained) and they will withstand even the harshest winters. SmartPool recommends that you store your collectors inside in a warm dry place.

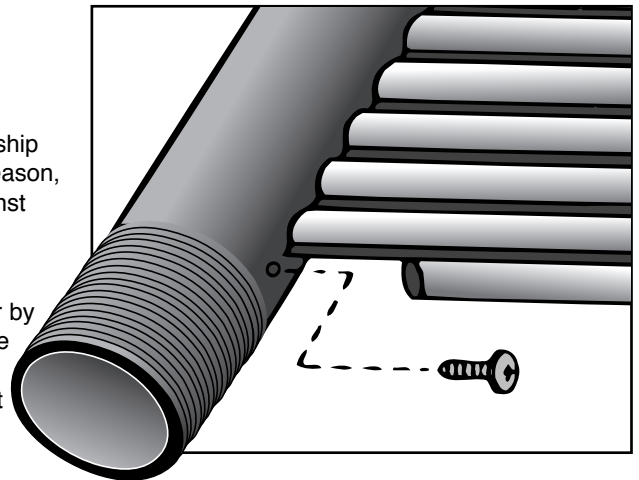
## Collector Repair

### IF THE COLLECTOR DEVELOPS A LEAK

Your solar collector is warranted against defects in materials and workmanship (see warranty for details and limitations). If a leak develops for any other reason, you may use the repair method shown. The collector is not warranted against freeze damage.

### SOLAR COLLECTOR REPAIR

This method allows for an easy and permanent, on-site repair of a collector by isolating the leading riser tube. Referring to the figure at the right, locate the tube to be isolated. (End tube has been shown for clarity). Using a sharp utility knife, very carefully cut away approximately 1" (25 mm) of the tube at both headers. Drive a #10 sheet metal screw, preferably stainless, into the hole in the header. The screw must be between 1/2" (12.7 mm) and 3/4" (19 mm) long. **DO NOT OVERTIGHTEN!** If the screw strips out, or if the repair leaks, use a #12 screw. This repair method will not void the collector warranty.



With proper care and winterization, you will enjoy your solar collectors for many years.

**SMARTPOOL SOLAR COLLECTOR**  
*Five year Limited warranty*  
( valid for North America only )



**FIVE YEAR WARRANTY**

Five year limited warranty from date of purchase with one year full.  
After the first year, the claimant shall pay the list price at the date of the claim less one-sixtieth (1/60) of that price for each full month remaining in the warranty period.

**ALL WARRANTY CLAIMS MUST BE HANDLED DIRECTLY WITH SMARTPOOL. DO NOT RETURN TO YOUR DEALER. SMARTPOOL ACCEPTS CLAIMS FROM POOL OWNERS ONLY.**

SmartPool Inc. warrants to the original purchaser of the Solar Collector that the company will, at its option, repair or replace any solar collector that proves to be defective in either workmanship or material upon prepaid return of the collector by the owner to SmartPool, Inc., subject to the provisions of the limited warranty stated above, and the exclusions and limitations set forth below. SmartPool, Inc. will, pursuant to the terms of this warranty, at its sole option, either repair the collector at a nominal charge to the owner, or replace the collector per the pro-rated provisions stated herein. All repaired or replaced collectors will be returned at the homeowner's expense. The pro-rated basis for collector replacement is set forth above.

**What is covered:** The solar collector is warranted to be free of defects in material and workmanship when leaving the factory.

**What is not covered:** Hardware; including hoses, clamps and plastic fittings; Any damage due to freezing caused by or related to improper drainage, winterization, or storage; Damage, defects, malfunctions, or other failures arising from use of the product which does not comply with the instructions provided by the manufacturer; Damage, defects, malfunctions, or other failure caused by or related to repairs performed by any servicer other than an authorized service representative of SmartPool, Inc. Claims will not be accepted for a collector's damage in transit unless damage to shipping container is noted at time of delivery on the transport company's delivery bill.

**SMARTPOOL, INC. SHALL IN NO WAY BE LIABLE OR RESPONSIBLE UNDER ANY CIRCUMSTANCES OR IN ANY AMOUNT FOR ANY CONSEQUENTIAL OR INCIDENTAL DAMAGES OR FOR ANY INJURY OR DAMAGES TO PERSON OR PROPERTY USING OR USED IN CONNECTION WITH THIS PRODUCT, OR FOR LOSS OF PROFITS OR OTHER COSTS OR EXPENSES OF ANY KIND OR CHARACTER. THERE ARE NO OTHER WARRANTIES OR REPRESENTATIONS, EITHER EXPRESS OR IMPLIED, WHETHER OF MERCHANTABILITY, FITNESS FOR A PARTICULAR PURPOSE, OR OTHER, MADE BY SMARTPOOL, INC., OTHER THAN THOSE SPECIFICALLY SET FORTH IN THIS WARRANTY. NO PERSON, FIRM, OR CORPORATION IS AUTHORIZED TO MAKE ANY REPRESENTATIONS, OR INCUR ANY OBLIGATIONS IN THE NAME OF OR ON BEHALF OF SMARTPOOL, INC., EXCEPT AS STATED HEREIN. THIS WARRANTY IS EXPRESSLY UNDERSTOOD TO BE THE EXCLUSIVE REMEDY AVAILABLE TO THE PURCHASER, AND THIS WARRANTY CONTAINS THE FULL AND COMPLETE AGREEMENT BETWEEN SMARTPOOL AND THE PURCHASER. THIS WARRANTY SETS FORTH THE ONLY OBLIGATIONS OF SMARTPOOL WITH REGARD TO THIS PRODUCT, AND THERE ARE NO WARRANTIES WHICH EXTEND BEYOND THE DESCRIPTION ON THE FACE HEREOF.**

**To File a Claim:**

- 1) Call 1-732-730-9880 to initiate a claim.
- 2) You will receive an instruction package within 10 days.
- 3) Please allow 2-4 weeks for warranty claims to be settled.
- 4) If you do not receive your collector within 6 weeks, please call SmartPool Warranty Department Monday through Friday at 1-732-730-9880.

The representations set forth herein are the only representations made by SmartPool, Inc. with respect to the product, and this warranty does not constitute either a performance or satisfaction guarantee. It is the responsibility of the product owner to regularly test and check the product for proper function and safety.

This warranty gives the original purchaser specific legal rights. You may have other rights depending on where you live.

**CAPTEUR SOLAIRE SMARTPOOL**

Garantie quinquennale limitée  
(Valide pour l'Amérique du nord seulement)



**GARANTIE QUINQUENNALE LIMITÉE**

Garantie quinquennale limitée à compter de la date de l'achat et comprenant une couverture complète d'une année. À la fin de la première année, le demandeur devra payer le prix courant à la date de la réclamation moins un soixantième (1/60) de ce prix pour chaque mois entier encore compris dans la période de garantie.

**TOUTES LES RÉCLAMATIONS DE GARANTIE DOIVENT ÊTRE ADRESSÉES DIRECTEMENT À SMARTPOOL. NE VOUS ADRESSEZ PAS AU CONCESSIONNAIRE. SMARTPOOL N'ACCÉPTE QUE LES RÉCLAMATIONS ÉMANANT DES PROPRIÉTAIRES DE PISCINE.**

La société SmartPool Inc. garantit à l'acheteur d'origine du capteur solaire qu'elle réparera ou remplacera, à son gré, tout capteur solaire qui présente un vice de fabrication ou de main-d'œuvre après que le propriétaire aura renvoyé ledit capteur en port prépayé à SmartPool Inc., en vertu des clauses de la garantie limitée énoncées ci-dessus et des exclusions et limitations indiquées ci-dessous. En vertu des conditions de la présente garantie, SmartPool Inc. procédera, à son gré, soit à la réparation du capteur moyennant des frais nominaux pour le propriétaire, soit au remplacement du capteur selon les conditions calculées au prorata qui sont énoncées dans la présente garantie. Tout capteur réparé ou remplacé sera renvoyé aux frais du propriétaire de la maison. Le calcul du prorata appliqué lors du remplacement d'un capteur est établi ci-dessus.

**Éléments couverts :** Le capteur solaire est garanti contre tout vice de fabrication ou de main-d'œuvre à sa sortie de l'usine.

**Éléments non couverts :** Matériel, y compris flexibles, bagues de serrage et raccords en plastique. Tout dommage dû au gel causé par une purge ou une hivernisation inappropriée ou en résultant. Dommages, défauts, pannes ou autres défaillances dus à une utilisation du produit allant à l'encontre des instructions fournies par le fabricant. Dommages, défauts, pannes ou autres défaillances causés par des réparations effectuées par un réparateur autre qu'un représentant du service après-vente de SmartPool Inc. ou en résultant. Aucune réclamation ne sera acceptée pour l'endommagement du capteur en cours de transport, sauf si l'endommagement du conteneur d'expédition a été noté sur le bulletin de livraison de la société de transport au moment de la livraison.

**EN AUCUN CAS ET POUR AUCUN MONTANT QUE CE SOIT, LA SOCIÉTÉ SMARTPOOL INC. NE SERA TENUE RESPONSABLE DES DOMMAGES CONSÉCUTIFS OU INDIRECTS LIÉS À CE PRODUIT, D'AUCUNE BLESSURE SUBIE PAR UNE PERSONNE AYANT UTILISÉ CE PRODUIT, D'AUCUN DOMMAGE SUBI PAR UNE PROPRIÉTÉ UTILISÉE AVEC CE PRODUIT OU D'AUCUNE PERTE D'EXPLOITATION, D'AUCUN COÛT OU D'AUCUNS FRAIS DE QUELQUE SORTE QUE CE SOIT. AUCUNE AUTRE GARANTIE NI ASSERTION, QU'ELLE SOIT EXPRESSE OU IMPLICITE, DE QUALITÉ MARCHANDE, D'ADAPTION À UN USAGE PARTICULIER OU AUTRE N'EST FAITE PAR SMARTPOOL INC., MISES À PART CELLES EXPRESSÉMENT ÉNONCÉES DANS LA PRÉSENTE GARANTIE. NULLE PERSONNE, PHYSIQUE OU MORALE, N'EST AUTORISÉE À FAIRE DES REPRÉSENTATIONS OU À CONTRACTER DES OBLIGATIONS AU NOM DE SMARTPOOL INC., SAUF TEL QUE STIPULÉ DANS LES PRÉSENTES. CETTE GARANTIE EST EXPRESSÉMENT COMPRISE COMME ÉTANT LE RECOURS EXCLUSIF DE L'ACHETEUR ET ELLE CONTIENT L'ENTENTE COMPLÈTE PASSÉE ENTRE SMARTPOOL ET LEDIT ACHETEUR. CETTE GARANTIE ÉTABLIT LES SEULES OBLIGATIONS DE SMARTPOOL QUANT À CE PRODUIT ET AUCUNE AUTRE GARANTIE NE PROLONGE LA DESCRIPTION QUI EN EST FAITE DANS LES PRÉSENTES.**

**Pour soumettre une réclamation :**

- 1) Composez le 1-732-730-9880 pour déposer la réclamation.
- 2) Vous recevrez une trousse d'instructions dans les dix jours qui suivent.
- 3) Veuillez allouer de deux à quatre semaines pour le règlement de la réclamation.
- 4) Si vous ne recevez pas le capteur dans les six semaines qui suivent, veuillez appeler le Service de la garantie de SmartPool au 1-732-730-9880, du lundi au vendredi.

Les assertions des présentes sont les seules assertions faites par SmartPool Inc. au sujet du produit et la présente garantie ne constitue pas une garantie de rendement ou de satisfaction.

Le propriétaire du produit est responsable de le tester et de le vérifier régulièrement pour s'assurer de son bon fonctionnement et de sa sécurité.

La présente garantie donne à l'acheteur d'origine des droits particuliers découlant de la loi. Il se peut que vous jouissiez d'autres droits selon l'endroit où vous vivez.

**Colector solar SunHeater**  
Garantía limitada de cinco años  
(Válido para la Norteamérica sólo)



**GARANTÍA DE CINCO AÑOS**

Garantía limitada de cinco años a partir de la fecha de compra, con un año de garantía completa. Después del primer año, el reclamante pagará el precio de lista vigente en la fecha de la reclamación menos una sexagésima parte (1/60) de ese precio por cada mes que quede en el período de la garantía.

**TODAS LAS RECLAMACIONES BAJO GARANTÍA DEBEN GESTIONARSE DIRECTAMENTE CON SMARTPOOL. NO DEVUELVA EL PRODUCTO A SU DISTRIBUIDOR. SMARTPOOL SÓLO ACEPTA RECLAMACIONES DE PROPIETARIOS DE PISCINAS.**

SmartPool Inc. garantiza al comprador original del colector solar que la empresa, a su elección, reparará o reemplazará cualquier colector solar que sea defectuoso, en cuanto a la fabricación o a los materiales, una vez que el propietario envíe el colector a SmartPool, Inc. con el franqueo pagado, sujeto a las disposiciones de la garantía limitada descrita más arriba, y las exclusiones y limitaciones descritas más abajo. De conformidad con los términos y condiciones de esta garantía, SmartPool, a su discreción exclusiva, reparará el colector por un precio simbólico para el propietario o reemplazará el colector según las disposiciones prorrateadas indicadas en esta garantía. El propietario correrá con los gastos de envío de todos los colectores reparados o reemplazados. Se indica la base prorrateada para el reemplazo de colectores más arriba.

**Qué está cubierto:** Se garantiza que el colector solar está libre de defectos de materiales o fabricación cuando sale de la fábrica.

**Qué no está cubierto:** Los accesorios de ferretería, incluidas las mangueras, abrazaderas y accesorios de plástico; daños producidos por la congelación debido a un vaciado, acondicionamiento para el invierno o almacenamiento inadecuados; daños, defectos, mal funcionamiento u otras fallas que surjan del uso del producto que no cumple con las instrucciones proporcionadas por el fabricante; daños, defectos, mal funcionamiento u otras fallas causados por o relacionados con reparaciones realizadas por cualquier técnico que no sea un representante de servicio autorizado de SmartPool, Inc. No se aceptarán reclamaciones

**SMARTPOOL, INC. BAJO NINGUNA CIRCUNSTANCIA Y POR NINGÚN MONTO SERÁ RESPONSABLE DE DAÑO EMERGENTE O INCIDENTAL ALGUNO, DE LESIONES O DAÑOS A PERSONAS O PROPIEDAD ALGUNO QUE USE O SEA USADO EN CONEXIÓN CON ESTE PRODUCTO, O DE LA PÉRDIDA DE GANANCIAS U OTROS COSTOS O GASTOS DEL TIPO O DE LA NATURALEZA QUE FUERE. SMARTPOOL, INC. NO OTORGA NINGUNA OTRA GARANTÍA Y NO HACE NINGUNA OTRA DECLARACIÓN, YA SEA EXPRESA O IMPLÍCITA, YA SEA DE COMERCIABILIDAD, DE IDONEIDAD PARA UN PROPÓSITO EN PARTICULAR O DE OTRO TIPO, QUE NO SEAN AQUÉLLAS ESTABLECIDAS ESPECÍFICAMENTE EN ESTA GARANTÍA. SALVO EN LOS CASOS ESTIPULADOS EN ESTA GARANTÍA, NINGUNA PERSONA, EMPRESA O SOCIEDAD ESTÁ AUTORIZADA PARA HACER DECLARACIONES O INCURRIR EN OBLIGACIONES A NOMBRE DE O POR PARTE DE SMARTPOOL, INC. QUEDA EXPRESAMENTE ENTENDIDO QUE ESTA GARANTÍA ES EL ÚNICO RECURSO AL CUAL TIENE DERECHO EL COMPRADOR Y ESTA GARANTÍA CONTIENE EL CONVENIO PLENO Y TOTAL ENTRE SMARTPOOL Y EL COMPRADOR. ESTA GARANTÍA ESTABLECE LAS ÚNICAS OBLIGACIONES DE SMARTPOOL CON RESPECTO A ESTE PRODUCTO Y NO EXISTE NINGUNA GARANTÍA QUE SE EXTIENDA MÁS ALLÁ DE LA DESCRIPCIÓN QUE APARECE AQUÍ.**

**Para presentar una reclamación:**

1. Llame al 1-732-730-9880 para iniciar el proceso de reclamación.
2. En un plazo de 10 días recibirá una carpeta de instrucciones.
3. Por favor espere entre 2 y 4 semanas a que se satisfagan las reclamaciones bajo garantía.
4. Si no recibe su colector en un plazo de 6 semanas, sírvase llamar al Departamento de Garantías de SmartPool al 1-732-730-9880.

Las declaraciones presentadas en esta garantía son las únicas declaraciones hechas por SmartPool, Inc. con respecto al producto, y esta garantía no constituye una garantía de rendimiento o satisfacción del producto. El propietario del producto tiene la responsabilidad de probar y verificar regularmente el producto para asegurar su buen funcionamiento y seguridad. Esta garantía otorga al comprador original derechos legales específicos. Usted puede tener otros derechos dependiendo del lugar en el que viva.

