

# PRIORITY DESTINATIONS® REDEMPTION SCHEDULE



## MORE CHOICES. MORE FREEDOM.

Take flight with the Priority Destinations Mastercard®. Earn unlimited Priority Miles® and redeem them for air travel, hotel, rental car, gift cards, cash rewards, and more!

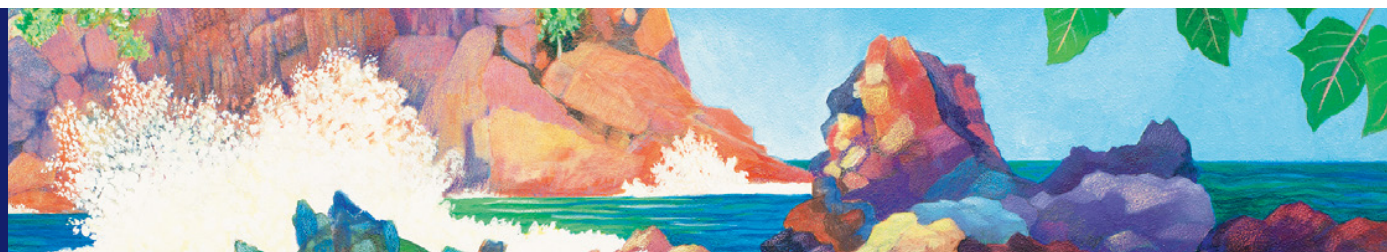
## HOW TO REDEEM YOUR PRIORITY MILES

To redeem your Priority Miles, simply visit the Priority Destinations Redemption website at [fhbdestinations.com](http://fhbdestinations.com). Once you log in, you can book a flight or browse and redeem from our selection of gift cards, merchandise and cash rewards 24 hours a day, 7 days a week. If you prefer to redeem by phone, you can also call us at one of the numbers below. Priority Miles earned are awarded shortly after transactions post, so you can redeem them as soon as they appear in your account!

## CONTACT

Travel Rewards Website: [fhbdestinations.com](http://fhbdestinations.com)  
 Travel and Rewards Center: (877) 676-5171 (World Elite)  
 (877) 668-4662 (World)  
 Hours: Monday to Friday:  
 7 a.m. to 7 p.m. HST  
 Saturday & Sunday:  
 8 a.m. to 6 p.m. HST

Priority Miles have no cash value except as described in the Priority Destinations World and World Elite Program Agreement. See the Priority Destinations World and World Elite Program Agreement for details. Travel and booking subject to availability. First Hawaiian Bank reserves the right to cancel or change the Program at any time without notice.



## TRAVEL REWARDS

Booking a flight, hotel and car online at [fhbdestinations.com](http://fhbdestinations.com) is simple and hassle free. Travel on your local, national or international airline of choice with no blackout dates.

When you don't have enough Priority Miles to cover your whole trip, you can combine them with cash. When combining a Priority Miles redemption with cash, you need as little as 2500 Priority Miles (100 for some local carriers) so it's always easy to redeem for travel. And remember, there are no redemption fees when you book your travel with at least the minimum amount of Priority Miles.

See how your normal spending habits can earn you free travel.

### EXAMPLE: WORLD ELITE MASTERCARD

Category	Annual Spend	Miles Earned
Travel (5x miles)	\$6,000	30,000
Travel (2x miles)	\$2,000	4,000
Everyday Purchases (2x miles)	\$5,000	10,000
Other (1x miles)	\$6,000	6,000
	<b>\$19,000</b>	<b>50,000</b>

Example above:

**50,000 Priority Miles = \$500 in travel!**

Priority Miles Redemption Calculator:

**1 Priority Mile = \$0.01 in travel value**

## MERCHANDISE

Use your Priority Miles to shop for electronics, housewares, toys, and tools from top manufactures such as Apple, Circulon, DeWalt, Keurig, Melissa & Doug, Michael Kors, Mikasa, Samsung, Sony, and more.\*

## GIFT CARDS AND E-GIFT CERTIFICATES

Redeem your Priority Miles for gift cards from local and national merchants. Gift card denominations range from \$25 to \$500, including but not limited to: Amazon.com, Apple iTunes, Babies R Us, Home Depot, Macy's, Roy's, Starbucks, Target, Wal-Mart, Whole Foods, and Zippy's!\*

REWARD	PRIORITY MILES
\$25 Gift Card	5,000
\$50 Gift Card	7,500
\$100 Gift Card	14,000
\$200 Gift Card	25,000

## CASH REWARDS

Cash back includes checks and statement credits from \$25 to \$5000 – see example values below. Statement credits are available in \$25 increments.

REWARD	PRIORITY MILES
\$50 Cash	6,250
\$100 Cash	12,500
\$250 Cash	31,250
\$500 Cash	62,500
\$1,000 Cash	125,000

## QUESTIONS ABOUT YOUR PRIORITY DESTINATIONS CARD?

### FIRST HAWAIIAN BANK CREDIT CARD CUSTOMER SERVICE:

World Elite Oahu: (808) 847-0056  
 Toll Free: (855) 616-6980  
 World Oahu: (808) 847-0055  
 Toll Free: (855) 616-6979

\* All reward items and travel redemptions are subject to availability, and First Hawaiian Bank reserves the right to withdraw, change or replace specific reward items at any time.